

A photograph of a light-colored, textured sofa against a white brick wall. In the foreground, a patterned rug with a repeating diamond or chevron design in shades of brown and beige is visible. The text 'aristide' is overlaid on the sofa in a white, lowercase, sans-serif font.

aristide

c a r p e t s

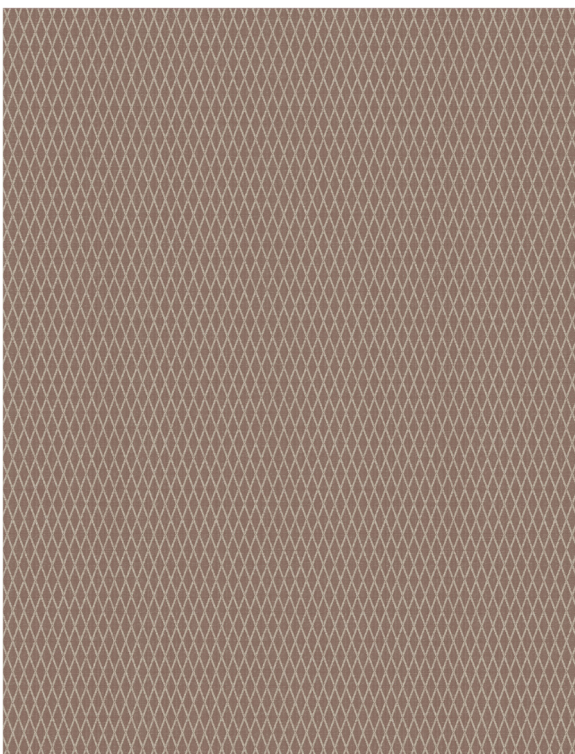
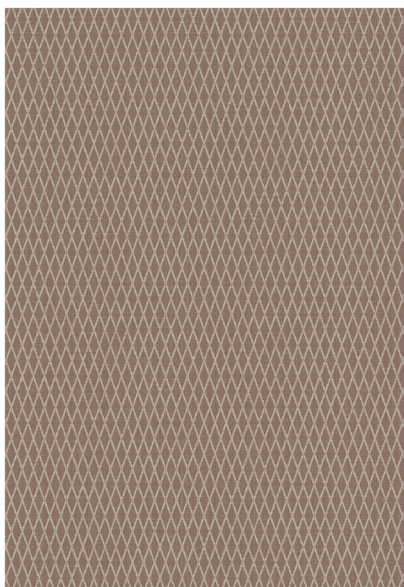


CARPET Opuntia 365 Rust

Composition: 70%WO - 30%VI

Size carpet:
200 x 290 cm

280 x 380 cm



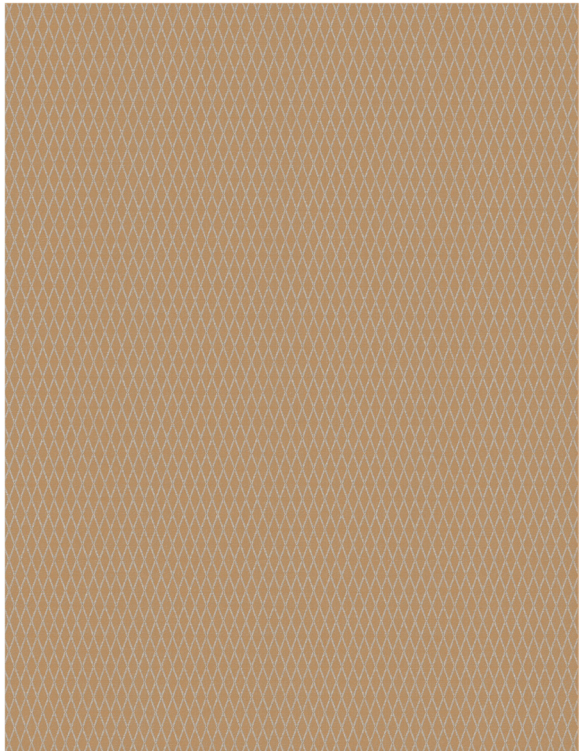
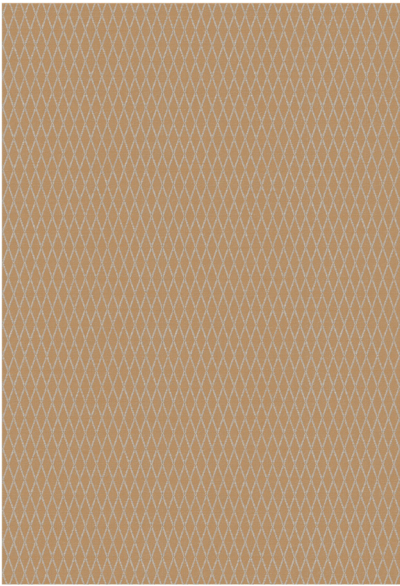


CARPET Opuntia 320 Corn

Composition: 70%WO - 30%VI

Size carpet:
200 x 290 cm

280 x 380 cm



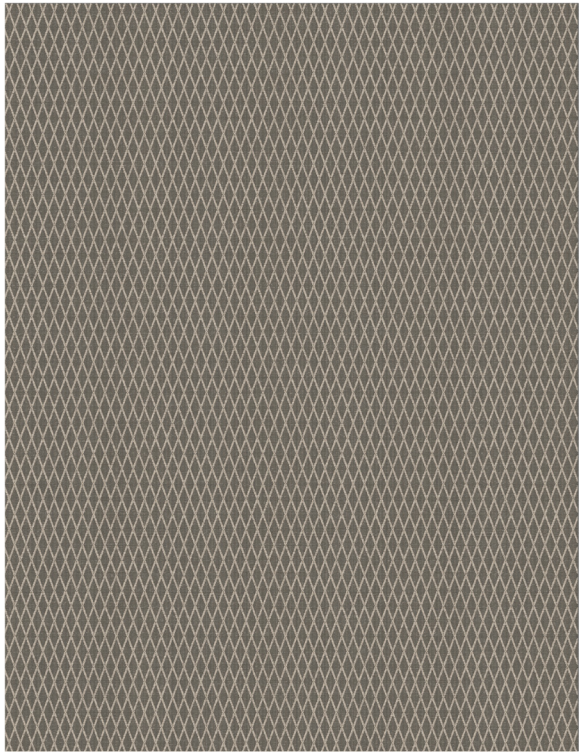
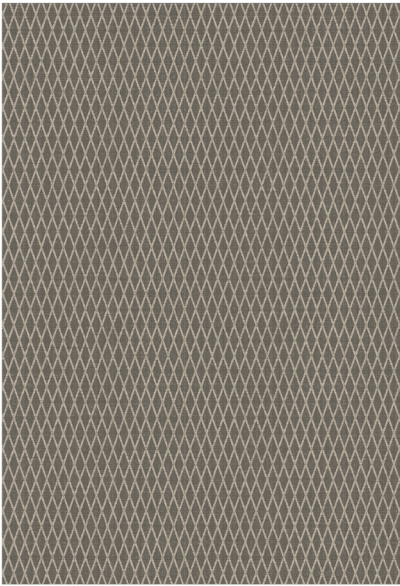


CARPET Opuntia 170 Pewter

Composition: 70%WO - 30%VI

Size carpet:
200 x 290 cm

280 x 380 cm



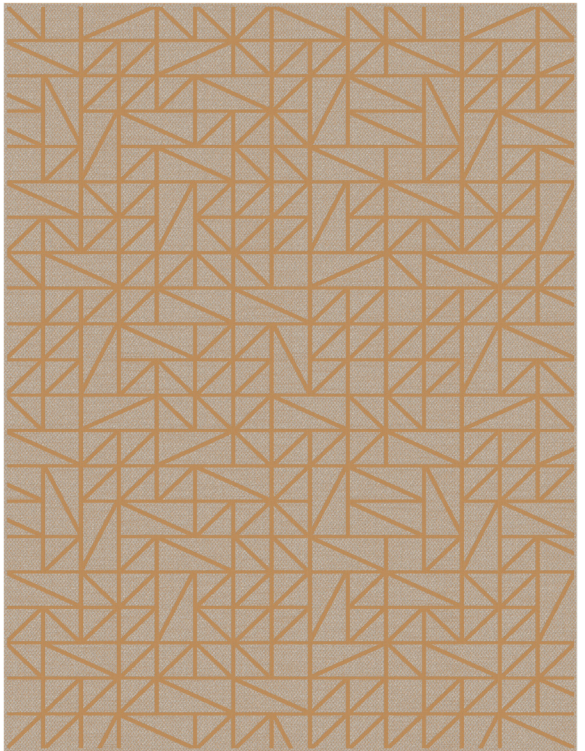
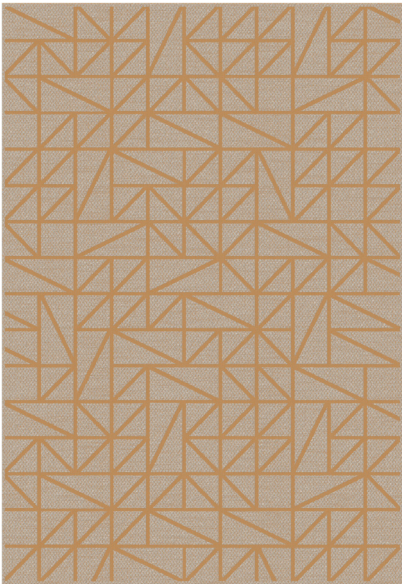


CARPET Cohen 320 Corn

Composition: 70%WO - 30%VI

Size carpet:
200 x 290 cm

280 x 380 cm



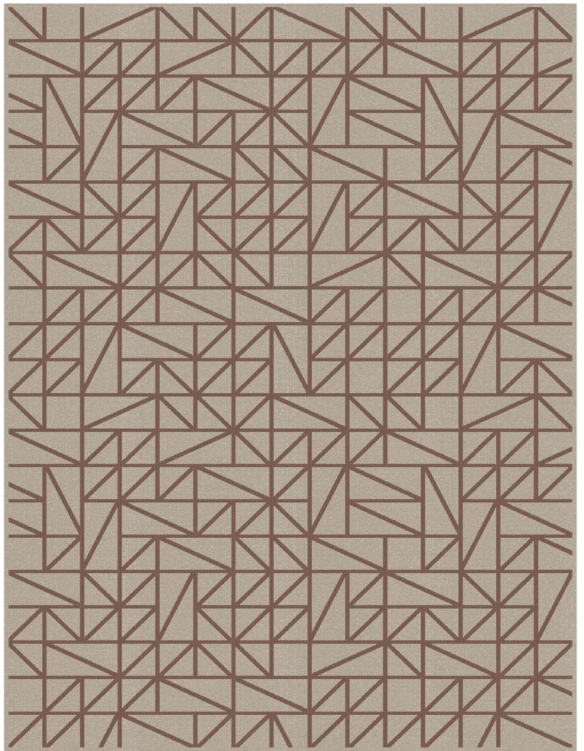
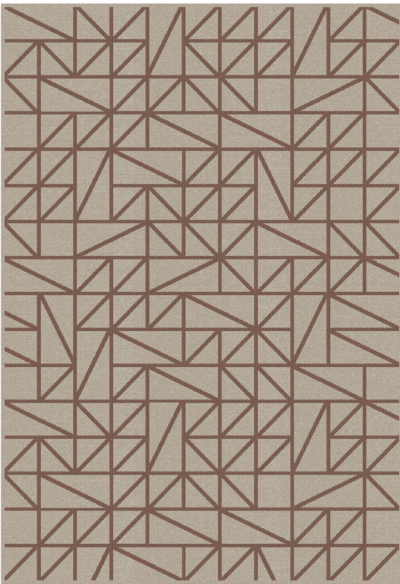


CARPET Cohen 365 Rust

Composition: 70%WO - 30%VI

Size carpet:
200 x 290 cm

280 x 380 cm



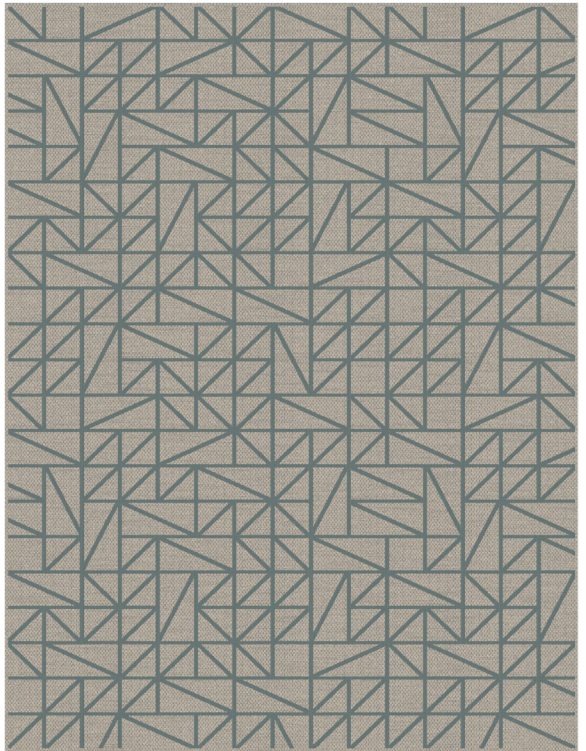
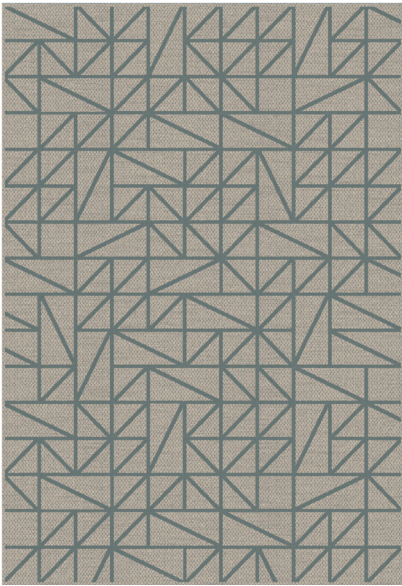


CARPET Cohen 651 Jeans

Composition: 70%WO - 30%VI

Size carpet:
200 x 290 cm

280 x 380 cm



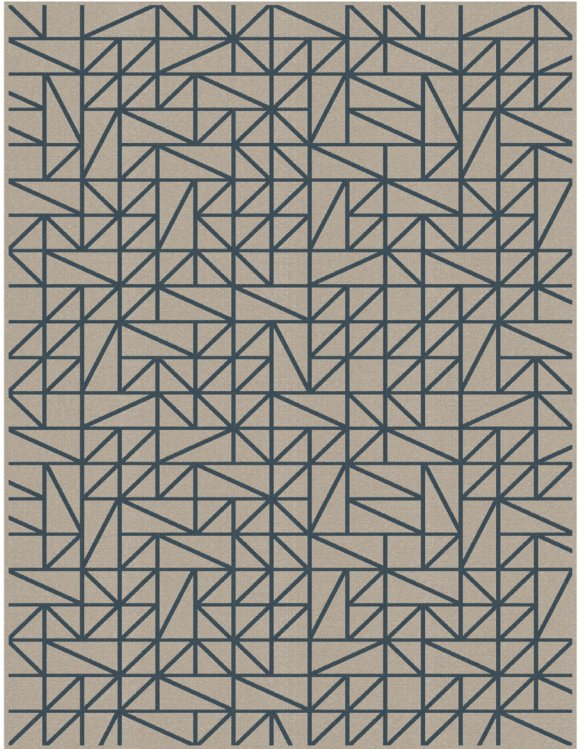
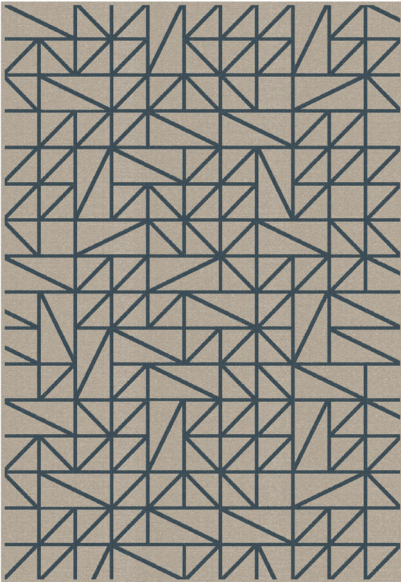


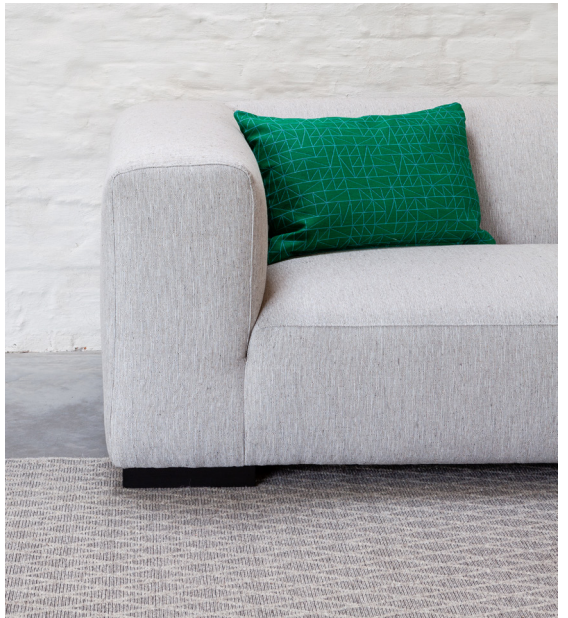
CARPET Cohen 670 Navy

Composition: 70%WO - 30%VI

Size carpet:
200 x 290 cm

280 x 380 cm





Onderhoud

- Regelmatig stofzuigen. (bij het eerste gebruik is het volstrekt normaal dat grote restvezels los komen)
- Bij vlekken onmiddellijk met een vochtige doek deppen op de vlek (niet wrijven!)
- Professionele tapijtreiniging of droogkuis aanbevolen

Entretien

- Aspirer régulièrement (lorsqu'un tapis est neuf, il est tout à fait normal qu'il perd ses excès de matière sous forme de peluche)
- En cas de taches, tamponnez immédiatement avec un chiffon humide (ne pas frotter!)
- Nettoyage de tapis professionnel ou nettoyage à sec recommandé.

Maintenance

- Regular vacuuming. (at first use it is completely normal that large residual fibers come loose)
- In case of stains, dab the stain immediately with a damp cloth (do not rub!)
- Professional carpet cleaning or dry cleaning recommended

Pflegeanleitung

- Regelmässig staubsaugen. Beim ersten Gebrauch ist es völlig normal, dass es mehrere lose Fasern gibt.
- Bei Flecken unmittelbar mit einem feuchten Tuch auf die Flecken tupfen (nicht reiben).
- Es wird eine professionelle Teppichreinigung oder eine chemische Reinigung empfohlen.

